



# Meat Technologies

Mobile Solutions



**GANTTEK**

# MOBILE SLAUGHTERING AND COOLING UNITS

Mobile slaughtering units are great solutions for the farmers having difficulties finding modern slaughtering facilities near the farms. These systems provide opportunity for farmers to sell their livestock without additional transfer and slaughtering costs. Mobile systems enable to process sheep, cattle and poultry from start to finish and store in mobile chill rooms to keep the meat fresh.

Shipping containers are used for easy shipment and installation. These systems have simple connection to on-site water and power. Mobile cattle slaughtering units are made from PU sandwich panels with steel supporting structure and it can be shipped dismantled or assembled. While dismantled systems are advantageous in overseas transportation, the assembled system is more advantageous in highway transportation. Dismantled systems can be easily installed with detailed assembly guides.

Despite, mobile slaughtering units are cost effective solution for sellers/buyers whom deals with meat trade, also ensure proper animal welfare conditions while animals remain in their familiar environment, they can be slaughtered without stress. Additionally, gives flexibility for the farmers. Farmers will decide when and how to slaughter the animal.

Cantek provides mobilized system solutions for animal slaughtering, meat deboning and packaging, offal cleaning, meat freezing, and fresh carcass/meat storage. These units can be used separately or can be combined to meet specific requirements.

# MOBILE CATTLE SLAUGHTERING UNIT-ON WHEELS

## M-SH-CATTLE-OW40



- ❖ 'Plug-n-play'
- ❖ The unit is combined with a trailer chassis that just needs to be connected to a truck for transportation.
- ❖ Self-contained slaughter unit for cattle with slaughtering capacity up to 5 per hour.
- ❖ No construction from ground – self-sufficiency by an integrated technical equipment room.
- ❖ Suitable for daily use at any location, i.e. the backyard of a farm.
- ❖ Cattle with max. 700 kgs of live weight can be slaughtered easily.
- ❖ Prevention of contamination and food safety risks in a safe environment with explicit sanitary standards.

# MOBILE CATTLE SLAUGHTERING UNIT-ON WHEELS

## M-SH-CATTLE-OW40

### Technical Data

- ❖ Dimensions: W:2550, L:13600, H:5300 mm (H:3800 mm when closed)
- ❖ Installed Power: 36 Kw
- ❖ Electricity: 380/400 V, 50 Hz
- ❖ Clean Water Inlet: DN 20
- ❖ Waste Water outlet: DN 50
- ❖ Blood Outlet: DN 20

### Unit Equipment

- ❖ Trailer Chassis
- ❖ Double Deck Slaughtering Construction
- ❖ CTP Panel Covering
- ❖ Floor Covering and Drainage (SS)
- ❖ Stunning Box (SS)
- ❖ Bleeding Area & Processing Area Tube rail systems (SS)
- ❖ Bleeding, Head taking, Transferring, Carcass Lowering Cranes
- ❖ Tube Rail Bleeding Hooks (SS)
- ❖ Tube Rail Processing Hooks (SS)
- ❖ Hydraulic Leg opening and Transferring Platform (SS)
- ❖ Hydraulic De-Hiding Machine (SS)
- ❖ Hydraulic Tripe and Carcass Splitting Platform (SS)
- ❖ Overhead Carcass Weighting (SS)
- ❖ Head Chute & Tripe Chute (SS)
- ❖ Washbasin & Knife Sterilizers (SS)
- ❖ LED Lighting
- ❖ Generator
- ❖ Blood Collection Tank (SS)
- ❖ Waste Water Collection Tank (SS)
- ❖ Clean Water Storage Tank (SS)
- ❖ Water Heater
- ❖ Fully installed piping (SS)
- ❖ Fully installed electrical cabling
- ❖ Cleaning System (Combination Unit – Water, Chemicals, Disinfectant)
- ❖ Hydraulic Control System for Constructions and equipment
- ❖ Electrical Control Panel with PLC control
- ❖ EFA Leg Cutting Share
- ❖ EFA Carcass Splitting Saw
- ❖ EFA Breastbone Saw
- ❖ EFA Quartering Saw
- ❖ EFA Stunner

(SS:AISI 304 Stainless Steel)

# MOBILE CATTLE SLAUGHTERING UNIT-ON WHEELS

## M-SH-CATTLE-OW40

Technical Room

Weighting

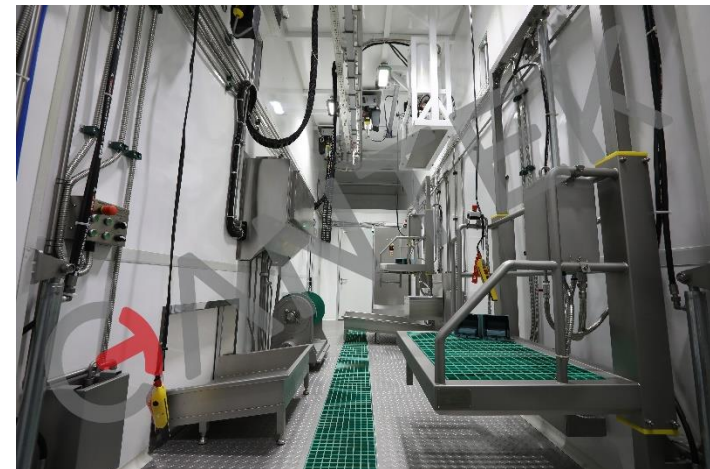
Transferring & De-hiding



Carcass  
Quartering

White & red offal  
removal and  
Carcass Splitting

Stunning & Bleeding



# MOBILE CATTLE SLAUGHTERING UNIT

## M-SH-CATTLE

- ❖ Complete slaughtering unit with simple power and water connection, meets all requirements without encountering all the problems related to the construction.
- ❖ Ready to use with whole installation works.
- ❖ Transport Option 1: Unit can be transported in one piece on a 3 Axles extensible low bed trailer on highways.
- ❖ For a daily or weekly average slaughter of cattle to be used directly in the farm's inn or to be distributed to the local market
- ❖ Capacity is up to 12 cattle/hour.
- ❖ Transport Option 2: Unit can be shipped completely dismantled on 2 containers and installed on site.



### Technical Data

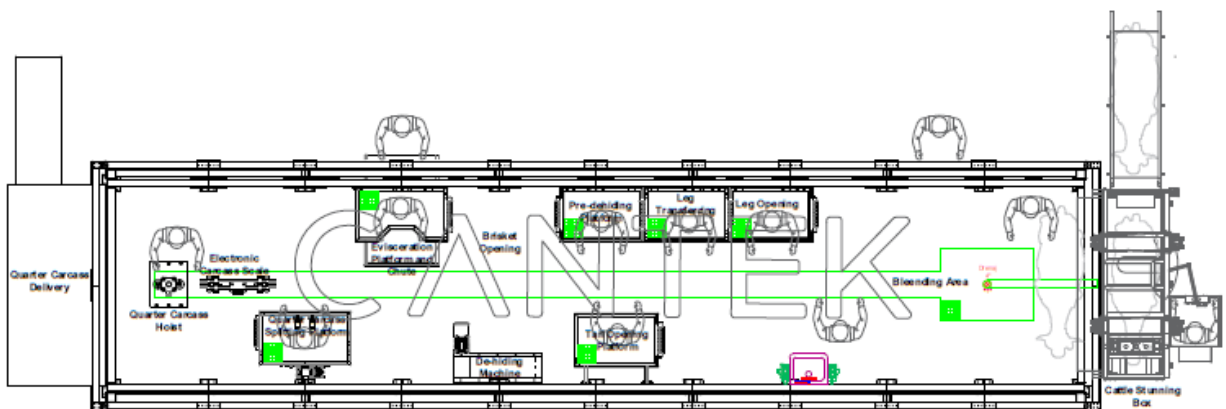
- ❖ Dimensions: W:3200, L:13200, H:5600 mm (H:3200 mm when closed)
- ❖ Installed Power: 8 kW (can varies according to the optional eq.)
- ❖ Electricity Info: 380/400 V, 50 Hz
- ❖ Water Requirement: 12 L/min., 4 Bar
- ❖ Air Requirement: 300 L/min., 8 Bar (may vary according to the optional eq.)

# MOBILE CATTLE SLAUGHTERING UNIT

## M-SH-CATTLE

### Unit Equipment

- ❖ Double deck slaughtering construction
- ❖ Sandwich panel covering
- ❖ Floor covering and stainless steel drainage
- ❖ Bleeding area monorail
- ❖ Bleeding crane
- ❖ Monorail bleeding hooks
- ❖ Leg opening platform (SS)
- ❖ Transferring platform (SS)
- ❖ Transferring hoist
- ❖ Processing area stainless steel twin rail
- ❖ Bi-rail processing hooks (SS)
- ❖ Pre-dehiding platform (SS)
- ❖ De-hiding machine
- ❖ Evisceration platform and chute (SS)
- ❖ Pneumatic carcass splitting platform (SS)
- ❖ Electronic carcass scale (SS)
- ❖ Quarter carcass hoist (SS)
- ❖ Quarter carcass delivery table (SS)
- ❖ Washbasin & Knife Sterilizers (SS)
- ❖ Fluorescent lighting
- ❖ Interior mechanical, electrical and air installations
- ❖ Hose reel for cleaning
- ❖ Watch window



### Optional Equipment

- ❖ Hydraulic Lifting System
- ❖ Cattle Stunning Box
- ❖ Stunner
- ❖ Trolley for organs
- ❖ Hydraulic Cutter for Fore and Hind Legs
- ❖ Carcass Splitting Saw
- ❖ Breastbone Saw
- ❖ Solar Power System



# MOBILE CATTLE SLAUGHTERING UNIT

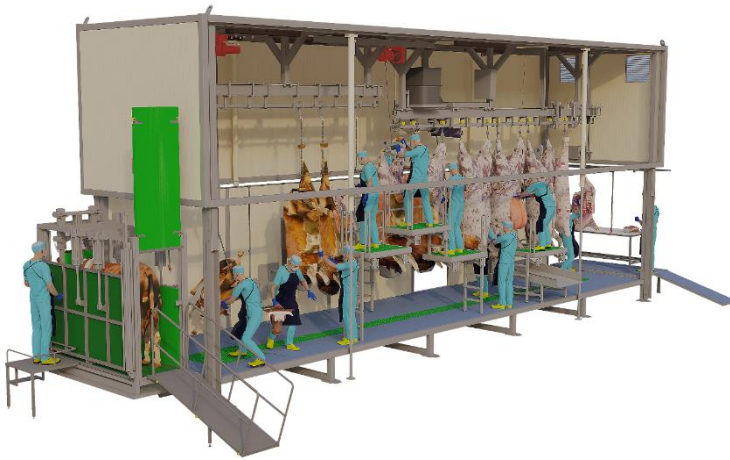
## M-SH-CATTLE



*Closed position for transport by truck*



*It is small slaughterhouse with required equipment*



*Used directly in your farm.*



*Easily integrated with other mobile solutions*



# MOBILE SHEEP SLAUGHTERING UNIT WITH COLD-ROOM M-SH-SHEEP-T1

- ❖ Suitable for small-medium-sized agricultural businesses such as farms and breeders that want to valorise their own local product.
- ❖ Slaughtering capacity is up to 8 sheep/hour.
- ❖ The cooling capacity is 9 sheep.
- ❖ Containerized systems are ready to be used and save installation costs and time.
- ❖ They do not require any building permit, authorizations or structural work.
- ❖ Management is easier because of the compact design of the system.
- ❖ Complete containerised system with cooling unit in 40" HC container, ready to use without any need for installation.



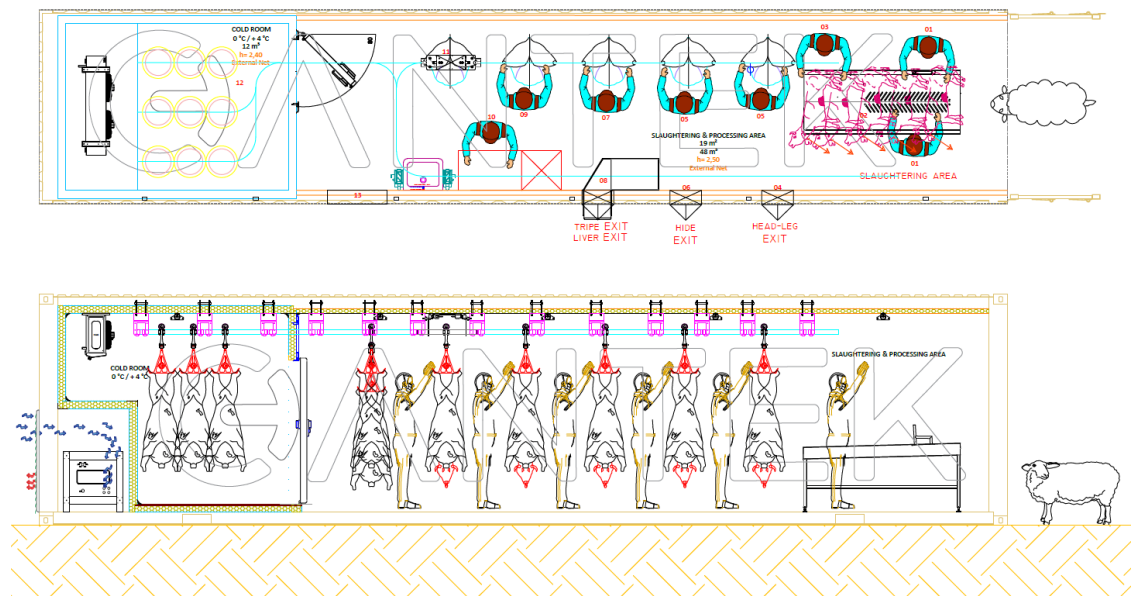
## Technical Data

- ❖ Dimensions: W:2440, L:12190, H:2900 mm
- ❖ Electricity Info: 380 / 400 V, 50 Hz
- ❖ Installed Power: 13 kW
- ❖ Water Requirement: 12 L/min., 4 Bar

# MOBILE SHEEP SLAUGHTERING UNIT WITH COLD-ROOM M-SH-SHEEP-T1

## Unit Equipment

- ❖ 40" HC Container
- ❖ Supporting column and beams
- ❖ Slaughtering area sandwich panel covering
- ❖ Bi-rails (SS)
- ❖ Aluminium tread plate floor covering
- ❖ Sheep slaughtering table with neck lift apparatus (SS)
- ❖ Sheep processing hooks (SS)
- ❖ Electronic carcass scale (SS)
- ❖ Washbasin and knife sterilizers (SS)
- ❖ Working table with pan (SS)
- ❖ Tripe chute (SS)
- ❖ Cold room sandwich panel covering
- ❖ Cold room floor panel covering with plywood
- ❖ Cooling unit
- ❖ Hinged cold room door
- ❖ Carcass exit door
- ❖ Lighting
- ❖ Hose reel for cleaning
- ❖ Interior mechanical, electrical installations



## Optional Equipment

- ❖ Trolley for organs

# MOBILE SHEEP SLAUGHTERING UNIT

## M-SH-SHEEP-T2

- ❖ Suitable for small-medium-sized agricultural businesses such as farms and breeders that want to valorise their own local product.
- ❖ Slaughtering capacity is up to 15 sheep/hour.
- ❖ Containerized systems are ready to be used and save installation costs and time.
- ❖ They do not require any building permit, authorizations or structural work.
- ❖ Management is easier because of the compact design of the system.
- ❖ Complete containerised system in 40" HC container, ready to use without any need for installation.



Sheep entrance and carcass exit door are made of container's steel.  
Container sheet will be cut and turned into a hinged door.

### Technical Data

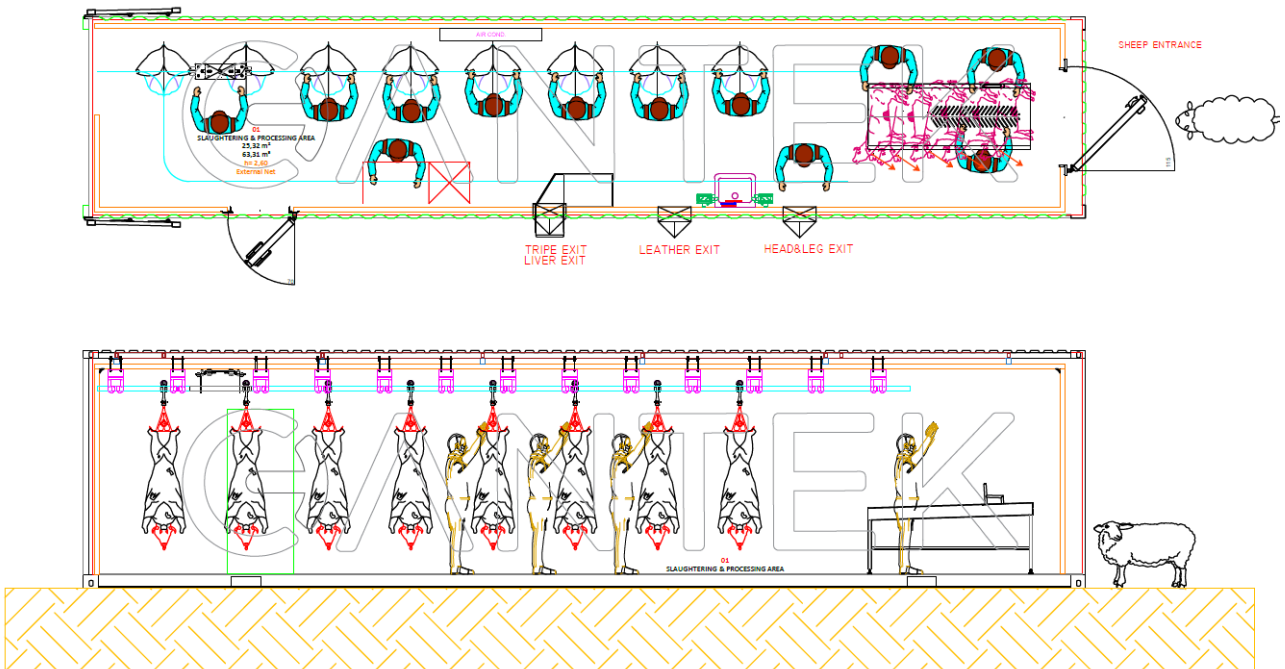
- ❖ Dimensions: W:2440, L:12190, H:2900 mm
- ❖ Electricity Info: 230 / 240 V, 50 Hz
- ❖ Installed Power: 4 kW
- ❖ Water Requirement: 12 Lt/min., 4 Bar

# MOBILE SHEEP SLAUGHTERING UNIT

## M-SH-SHEEP-T2

### Unit Equipment

- ❖ 40" HC Container
- ❖ Supporting column and beams
- ❖ Sandwich panel covering
- ❖ Bi-rails (SS)
- ❖ Aluminium tread plate floor covering
- ❖ Sheep slaughtering table with neck lift apparatus (SS)
- ❖ Sheep processing hooks (SS)
- ❖ Electronic carcass scale (SS)
- ❖ Washbasin and knife sterilizers (SS)
- ❖ Working table with pan (SS)
- ❖ Tripe chute (SS)
- ❖ Lighting
- ❖ Hose reel for cleaning
- ❖ Interior mechanical, electrical installations



### Optional Equipment

- ❖ Trolley for organs

# MOBILE POULTRY SLAUGHTERING UNIT

## M-SH-POULTRY-T1

- ❖ Modular slaughtering units are designed to optimize space and comply with hygiene standards, animal welfare legislation and standards regarding the health and safety of the operator.
- ❖ Our modular slaughter units can be customized to meet your needs many options available, can be used with another modular unit or with an existing building etc.
- ❖ These ready-to-use modular slaughtering units can be installed quickly and easily, even in small spaces. They do not require any building permit, authorizations or structural work.
- ❖ Modular slaughtering units only have to be connected to electricity, water and sewer.
- ❖ Electrical power requirement is 18 kW, it will change according to optional equipment.
- ❖ The modular slaughtering unit for poultry guarantees maximum efficiency with a limited financial investment: all the stages of the poultry slaughtering process are facilitated and optimized.
- ❖ The modular slaughtering and processing unit is the best solution for small to medium size agricultural businesses willing to invest in the slaughtering process.



### Technical Data

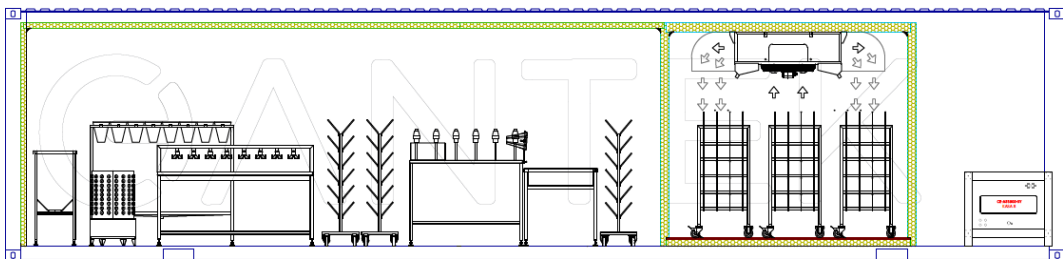
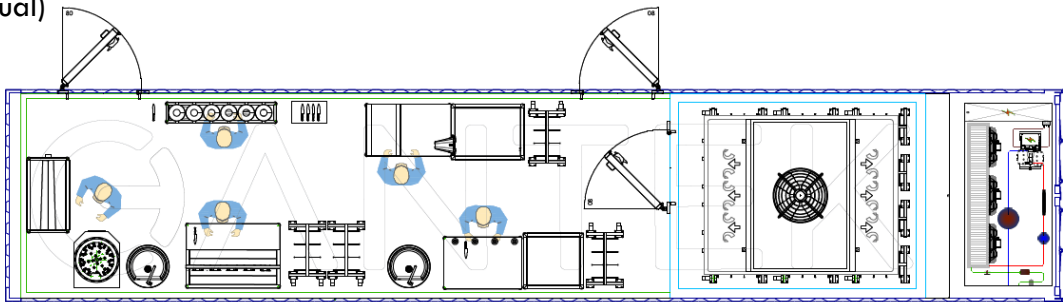
- ❖ Capacity: 100 BPH
- ❖ Dimensions: W:2440, L:12190, H:2900 mm
- ❖ Installed Power: 18 kW
- ❖ Electricity Info: 380 V/400V 50Hz
- ❖ Water Requirement: 12 lt / Pcs Poultry
- ❖ Air Requirement: 6-8 Bar,

# MOBILE POULTRY SLAUGHTERING UNIT

## M-SH-POULTRY-T1

### Unit Equipment

- ❖ 40" HC Container
- ❖ Sandwich panel covering
- ❖ Aluminium tread plate floor covering
- ❖ Killing funnel (SS)
- ❖ Scalding
- ❖ Drum Plucker (SS)
- ❖ Evisceration stand (SS)
- ❖ Poultry manual cut-up equipment (SS)
- ❖ Whole chicken packaging equipment (manual)
- ❖ Carcass transport trolley (for air chilling)
- ❖ Chilling system
- ❖ Personnel door
- ❖ Cold-room door
- ❖ Lighting
- ❖ Electric control panel
- ❖ Washbasin and Knife sterilizers (SS)
- ❖ Interior mechanical, electrical installation
- ❖ Hose reel for cleaning



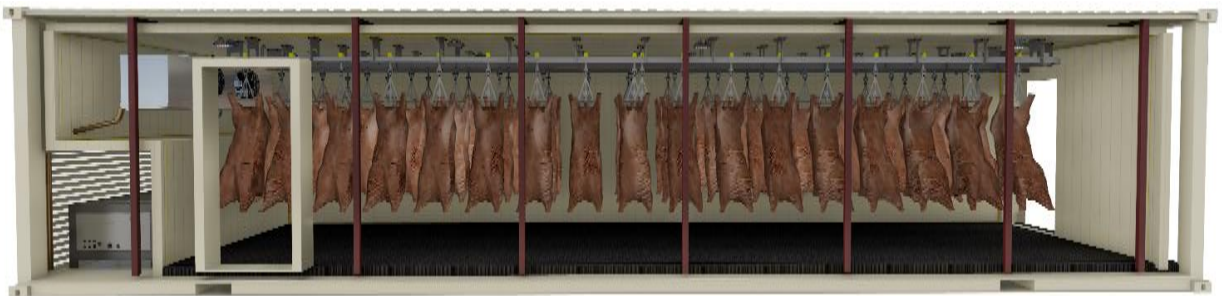
### Optional Equipment

- ❖ Poultry Cut-up Machine – Whipsaw Type
- ❖ Poultry Bag Opening Equipment – Semi Automatic
- ❖ Internal Cleaning Vacuum
- ❖ Ventilation systems for process
- ❖ Air conditioner for process

# MOBILE CARCASS COLDROOM UNIT

## M-CCR-T1

- ❖ Suitable for small-medium-sized agricultural businesses such as farms and breeders that want to valorise their own local product.
- ❖ Cold room capacity is up to 2000 kg. (~65-75 sheep or ~7-10 cattle)
- ❖ Containerized systems are ready to be used, save installation costs and time.
- ❖ They do not require any building permit, authorizations or structural work.
- ❖ Management is easier because of the compact design of the system.
- ❖ Complete containerised system with cooling unit in 40" HC container, ready to use without any need for installation.



### Technical Data

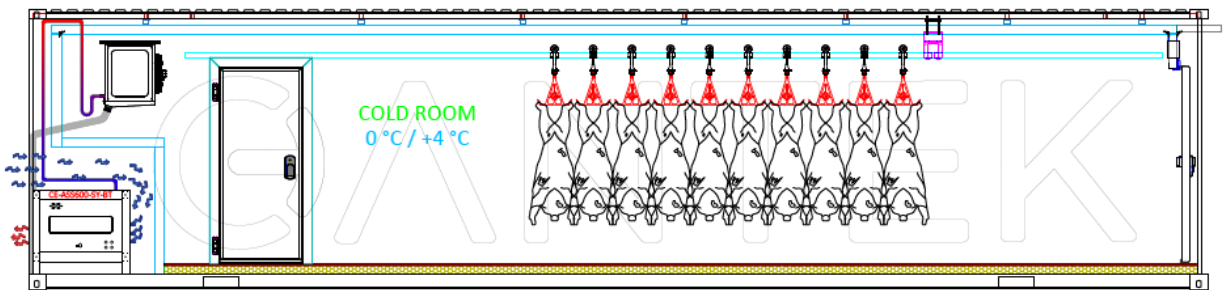
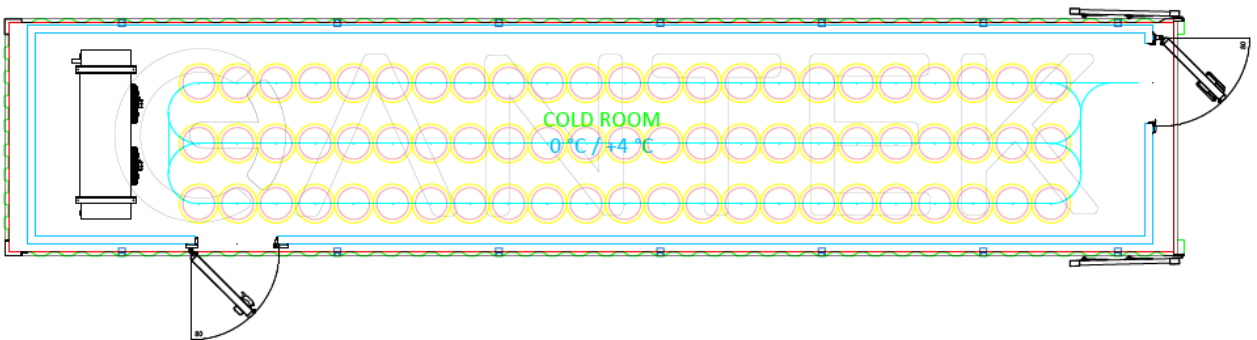
- ❖ Dimensions: W:2440, L:12190, H:2900 mm
- ❖ Electricity Info: 380 / 400 V, 50 Hz
- ❖ Installed Power: 11 kW

# MOBILE CARCASS COLDROOM UNIT

## M-CCR-T1

### Unit Equipment

- ❖ 40" HC Container
- ❖ Supporting column and beams
- ❖ Sandwich panel covering
- ❖ Floor panel cover with plywood
- ❖ Cooling unit
- ❖ Bi- rails (SS)
- ❖ Sheep or cattle storage hooks (SS)
- ❖ Insulated cold-room door
- ❖ Lighting
- ❖ Interior mechanical, electrical installations

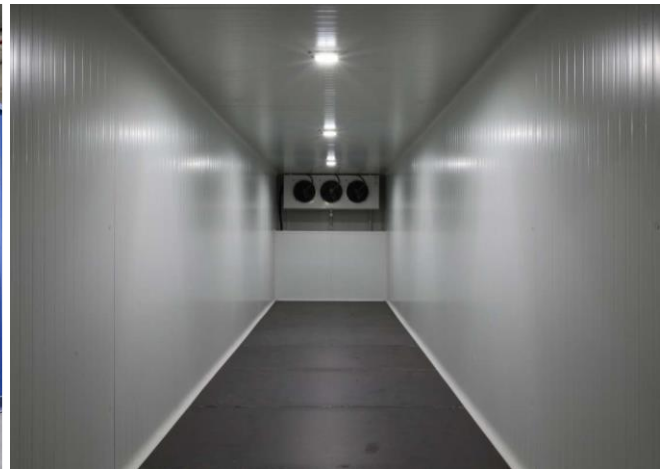




# MOBILE COLDROOM UNIT

## M-CR-T1

- ❖ Cantek containerized cold storages gives you many advantages because it is portable.
- ❖ Portable containers are in compliance with the international standards for truck transportation.
- ❖ Cold-room capacity is up to 11 tones.
- ❖ They are fast implementation, cost of purchasing and managing.
- ❖ Complete containerised system with cooling unit in 40" HC container, ready to use without any need for installation.



### Technical Data

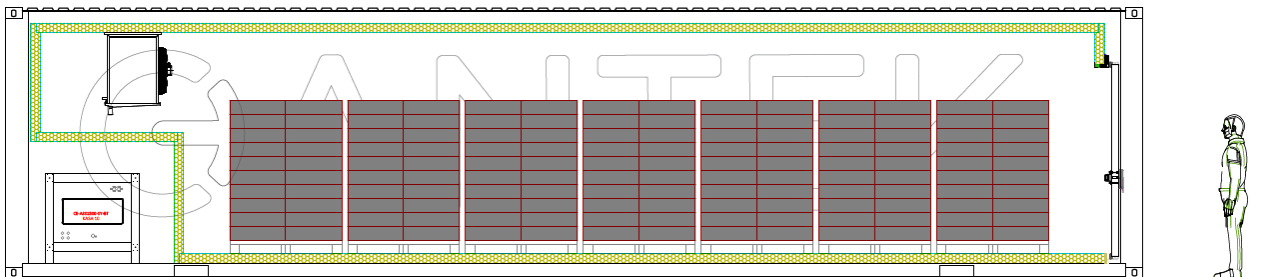
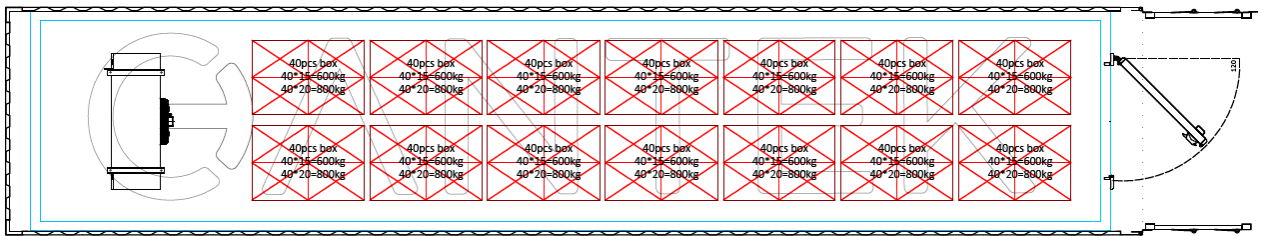
- ❖ Dimensions: W:2440, L:12190, H:2900 mm
- ❖ Installed Power: 10,2 kW
- ❖ Electricity Info: 380/400 V, 50 Hz

# MOBILE COLDROOM UNIT

## M-CR-T1

### Unit Equipment

- ❖ 40" HC Container
- ❖ Sandwich panel covering
- ❖ Floor panel cover with plywood
- ❖ Cooling unit
- ❖ Insulated cold-room door
- ❖ Electric control panel
- ❖ Lighting
- ❖ Interior mechanical, electrical installations



# MOBILE CARCASS CUTTING/DEBONING UNIT

## M-CUTTING-T1

- ❖ Suitable for small-medium-sized agricultural businesses such as farms and breeders that want to valorise their own local product.
- ❖ Containerized systems are ready to be used and save installation costs and time.
- ❖ They do not require any building permit, authorizations or structural work.
- ❖ Complete containerised system with cooling unit in 40" HC container, ready to use without any need for installation.



### Technical Data

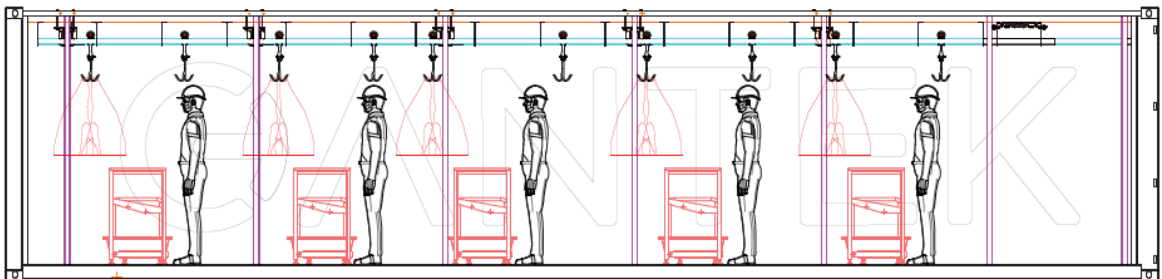
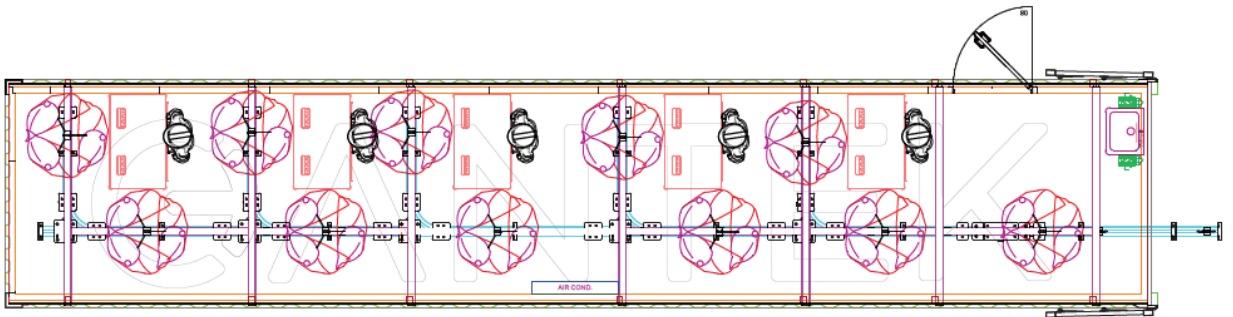
- ❖ Dimensions: W:2440, L:12190, H:2900 mm
- ❖ Electricity Info: 230 / 240 V, 50 Hz
- ❖ Installed Power: 4 kW
- ❖ Water Requirement: 5 Lt/min., 4 Bar

# MOBILE CARCASS CUTTING/DEBONING UNIT

## M-CUTTING-T1

### Unit Equipment

- ❖ 40" HC Container
- ❖ Supporting column and beams
- ❖ Sandwich panel covering
- ❖ Bi- rails (SS)
- ❖ Aluminium tread plate floor covering
- ❖ Sheep or cattle storage hooks (SS)
- ❖ Cutting Tables (SS)
- ❖ Hose reel for cleaning
- ❖ Electronic carcass scale (SS)
- ❖ Washbasin and knife sterilizers (SS)
- ❖ Lighting
- ❖ Interior mechanical, electrical installations



### Optional Equipment

- ❖ Trolley

# MOBILE OFFAL PROCESSING UNIT

## M-OFFAL-T1

- ❖ Suitable for small-medium-sized agricultural businesses such as farms and breeders that want to valorise their own local product.
- ❖ They are fast implementation, cost of purchasing and managing.
- ❖ Complete containerised system with cooling unit in 40" HC container, ready to use without any need for installation.



### Technical Data

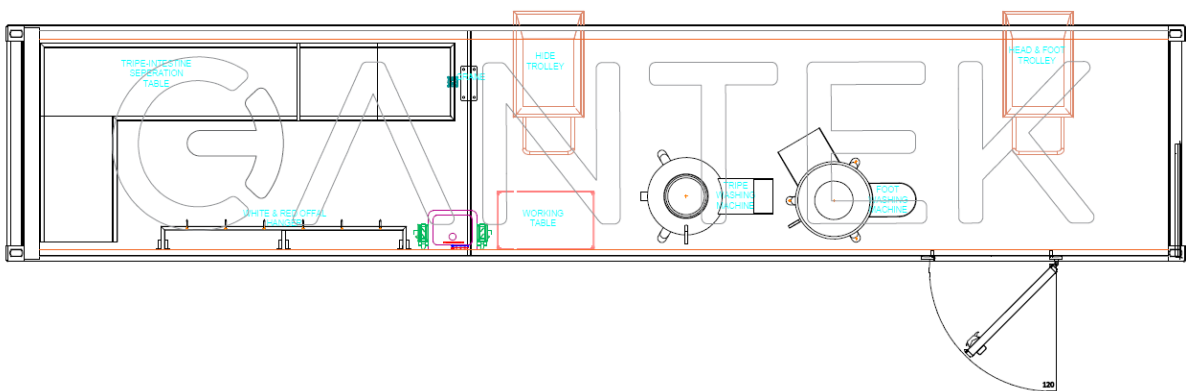
- ❖ Dimensions: W:2440, L:12190, H:2900 mm
- ❖ Installed Power: 5 kW (without cleaning machines)
- ❖ Installed Power: 16kW (with cleaning machines)
- ❖ Electricity Info: 380 / 400 V, 50 Hz
- ❖ Water Requirement: 12 Lt/min., 4 Bar

# MOBILE OFFAL PROCESSING UNIT

## M-OFFAL-T1

### Unit Equipment

- ❖ 40" HC Container
  - ❖ Supporting column and beams
  - ❖ Sandwich panel covering
  - ❖ Aluminium tread plate floor covering
  - ❖ Tripe Intestine separation and washing table (SS)
  - ❖ Hose reel for cleaning
  - ❖ Tripe tipper crane
  - ❖ Offal hanger (SS)
  - ❖ Washbasin and knife sterilizers (SS)
  - ❖ Working table (SS)
  - ❖ Lighting
  - ❖ Personnel entrance door
  - ❖ Interior mechanical, electrical installations
- ✓ Tripe washing machine and feet washing machine needs only 65° C hot water. Client is responsible for hot water.
  - ✓ Tripe washing cap: 40-50 kg/per cycle
  - ✓ Feet washing cap: 200 kg/per cycle



### Optional Equipment

- ❖ Trolley for organs
- ❖ Tripe Cleaning machine
- ❖ Feet Cleaning machine

# MOBILE OFFAL PROCESSING UNIT

## M-OFFAL-T1



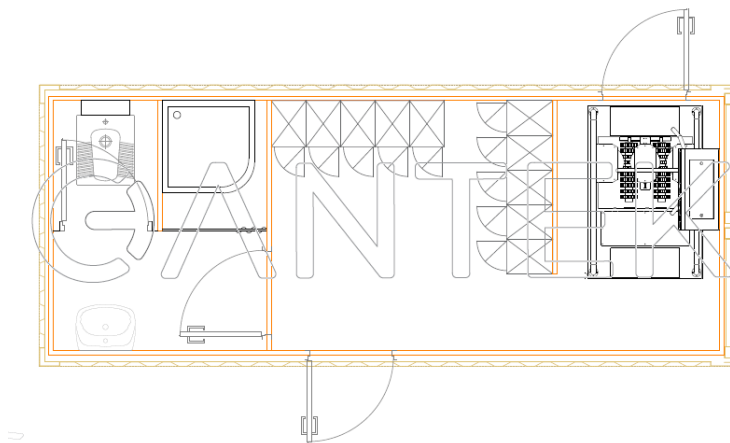
# MOBILE STAFF DRESSING UNIT

## M-PERSONAL-T1

- ❖ Suitable for small-medium sized activities.
- ❖ Easy installation and operation
- ❖ Complete containerised system within 20" HC container, ready to use without any need for installation.

### Unit Equipment

- ❖ 20" Container
- ❖ Sandwich panel covering
- ❖ Floor covering
- ❖ Pan closet
- ❖ Flush tank
- ❖ Shower pan
- ❖ Shower faucet
- ❖ Shower curtain
- ❖ Sink
- ❖ Personnel locker for 10 staff
- ❖ PVC doors
- ❖ LED lighting
- ❖ Personnel entrance door
- ❖ Interior mechanical, electrical installations
- ❖ Hygiene station (OPTIONAL)



### Technical Data

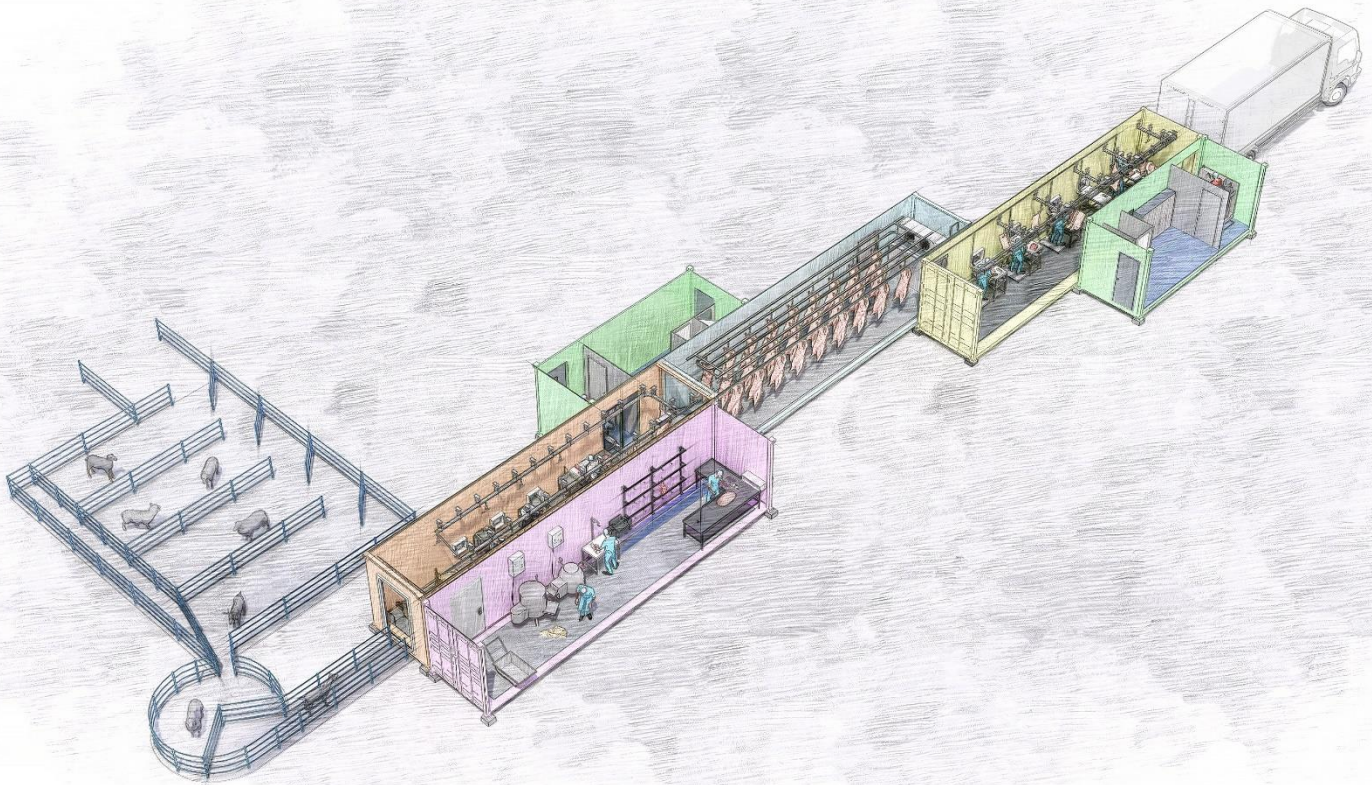
- ❖ Dimensions: W:2440, L:6060, H:2700 mm
- ❖ Installed Power: 6 kW
- ❖ Electricity Info: 380 / 400 V, 50 Hz



# COMBINED MOBILE SOLUTIONS

## Establish your own facility easily

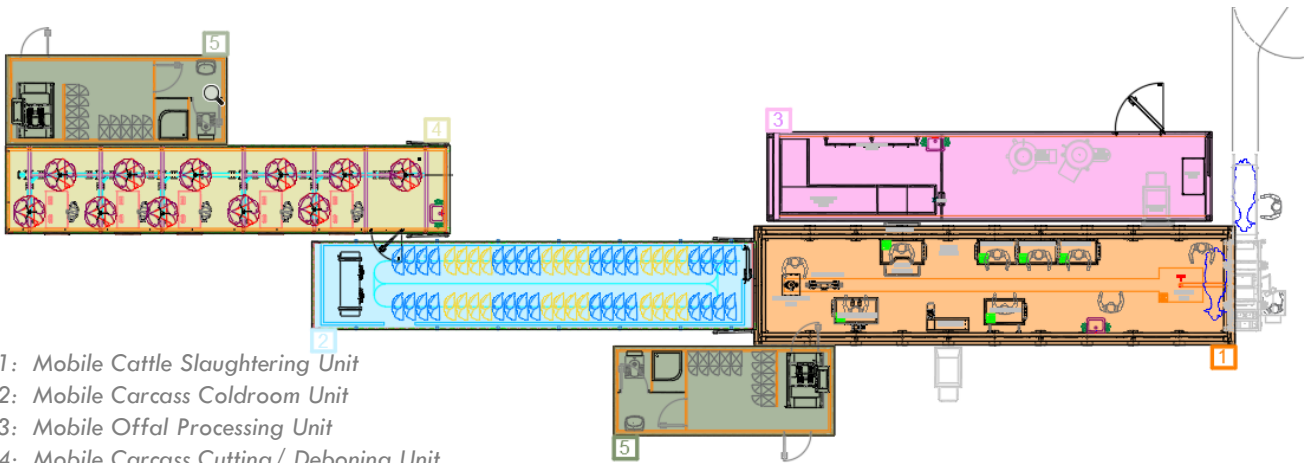
❖ By combining the slaughtering units with a carcass cold room, offal cleaning, deboning, and dressing units, a modern slaughterhouse can be established without any additional building.



- 1: Mobile Slaughtering Unit
- 2: Mobile Carcass Coldroom Unit
- 3: Mobile Offal Processing Unit
- 4: Mobile Carcass Cutting/ Deboning Unit
- 5: Mobile Dressing Unit

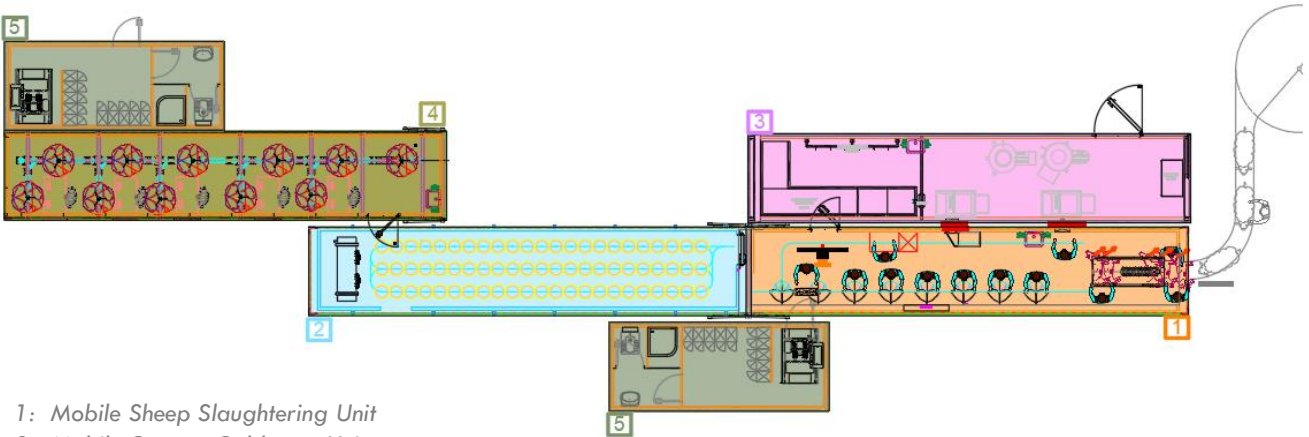
# COMBINED MOBILE SOLUTIONS

- ❖ Our mobile systems can be used individually or combined depending on the customer's requirements. Additionally, it is possible to combine these units with existing buildings.
- ❖ Unit quantities can be increased or decreased as needed.



- 1: Mobile Cattle Slaughtering Unit
- 2: Mobile Carcass Coldroom Unit
- 3: Mobile Offal Processing Unit
- 4: Mobile Carcass Cutting/ Deboning Unit
- 5: Mobile Dressing Unit

EXAMPLE COMBINATION FOR CATTLE



- 1: Mobile Sheep Slaughtering Unit
- 2: Mobile Carcass Coldroom Unit
- 3: Mobile Offal Processing Unit
- 4: Mobile Carcass Cutting/ Deboning Unit
- 5: Mobile Dressing Unit

EXAMPLE COMBINATION FOR SHEEP





Organize Sanayi Bölgesi 2. Kısım  
21. Cad. No:1 Antalya / TURKEY  
T. +90 (242) 258 17 00



[www.cantekgroup.com](http://www.cantekgroup.com)